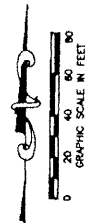


# MIRASOL PARCEL ONE

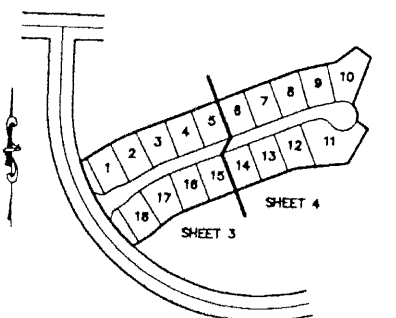
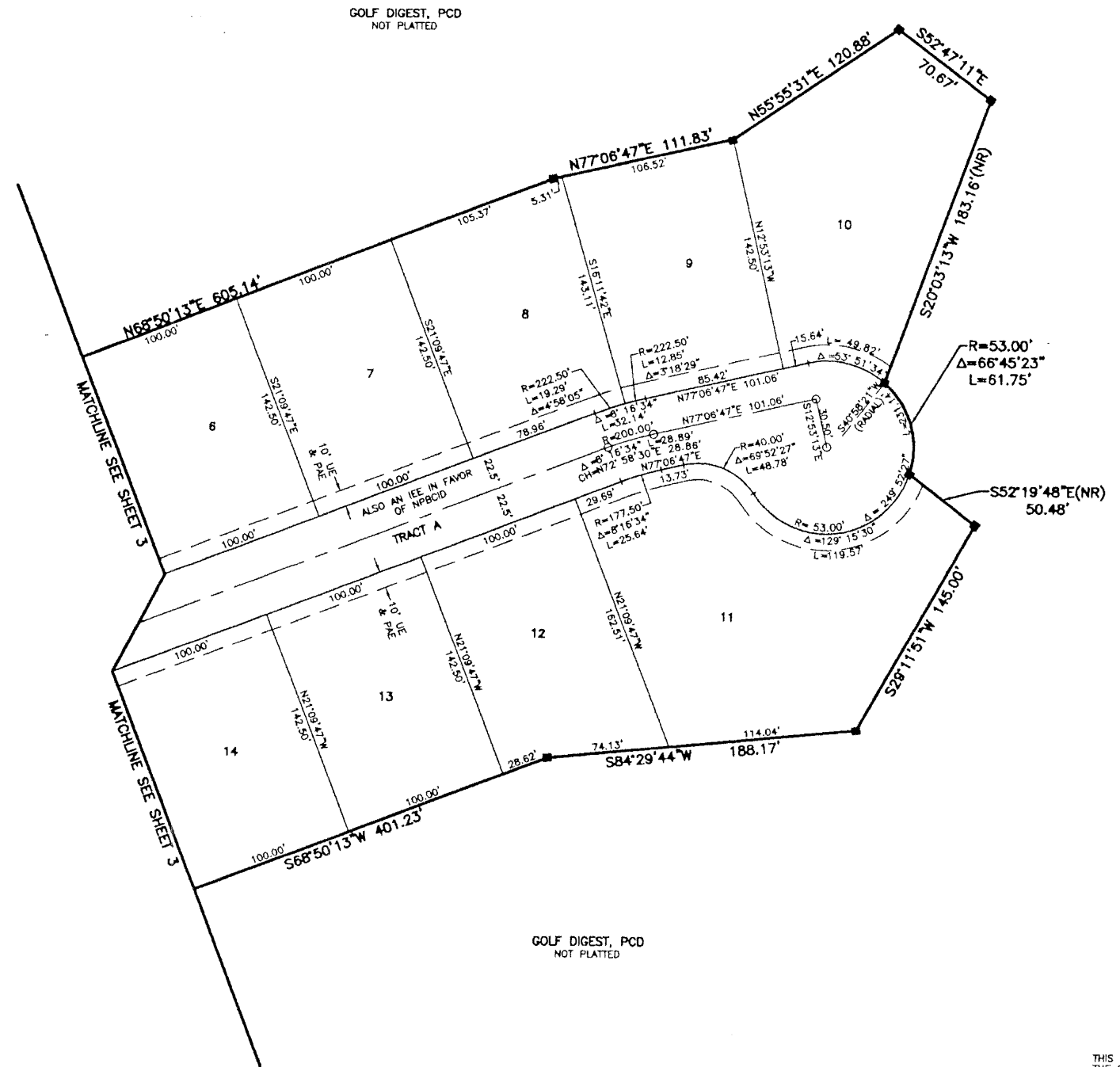
PART OF GOLF DIGEST P.C.D.  
SECTION 4, TOWNSHIP 42 SOUTH, RANGE 42 EAST,  
CITY OF PALM BEACH GARDENS,  
PALM BEACH COUNTY, FLORIDA  
NOVEMBER, 2000 SHEET 4 OF 4

# 69

STATE OF FLORIDA  
COUNTY OF PALM BEACH  
THIS PLAT WAS FILED FOR  
RECORD \_\_\_\_\_ DAY OF \_\_\_\_\_  
AD, 2000 AND DULY RECORDED  
IN PLAT BOOK \_\_\_\_\_ ON PAGES  
\_\_\_\_\_ AND \_\_\_\_\_  
BY: DOROTHY H. WILKEN, CLERK  
D.C.



CIRCUIT COURT SEAL



SHEET LOCATION MAP  
NOT TO SCALE

- LEGEND**
- Δ CENTRAL (DELTA) ANGLE
  - CH CHORD
  - DE DRAINAGE EASEMENT
  - IEE INGRESS-EGRESS EASEMENT
  - L ARC LENGTH
  - NPBCID NORTHERN PALM BEACH COUNTY IMPROVEMENT DISTRICT
  - (NR) NON-RADIAL
  - ORB OFFICIAL RECORD BOOK
  - PAE PEDESTRIAN ACCESS EASEMENT
  - PB PLAT BOOK
  - PG(S) PAGE(S)
  - PCD PLANNED COMMUNITY DEVELOPMENT
  - R RADIUS
  - (TYP) TYPICAL
  - UE UTILITY EASEMENT
  - PERMANENT REFERENCE MONUMENT FOUND LB 048 (4" x 4" CONCRETE)
  - PERMANENT REFERENCE MONUMENT SET LB 048 (4" x 4" CONCRETE)
  - PERMANENT CONTROL POINT SET LB 048
  - ε CENTERLINE

REV.: 11-30-00  
CAD FILE:  
TAYLPA01\PA01RPO3

THIS INSTRUMENT WAS PREPARED BY MARY HANNA CLODFELTER, P.S.M., IN THE OFFICES OF MOCK, ROOS & ASSOCIATES, INC., 5720 CORPORATE WAY, WEST PALM BEACH, FLORIDA 33407.

SCALE:  
1"=40'  
P.A. NO.:  
99313.00  
DATE:  
MARCH 2000  
DRAWING NO.:  
42-42-04-34

FLORIDA L.B. NO. 48

**MOCK ROOS**  
ENGINEERS ARCHITECTS PLANNERS

5720 Corporate Way, West Palm Beach, Florida 33407  
(561) 683-3113, fax 478-7248

SHEET 4 OF 4

**MIRASOL PARCEL ONE**  
PART OF GOLF DIGEST P.C.D.  
SITUATED IN SECTION 4,  
TOWNSHIP 42 SOUTH, RANGE 42 EAST,  
CITY OF PALM BEACH GARDENS,  
PALM BEACH COUNTY, FLORIDA